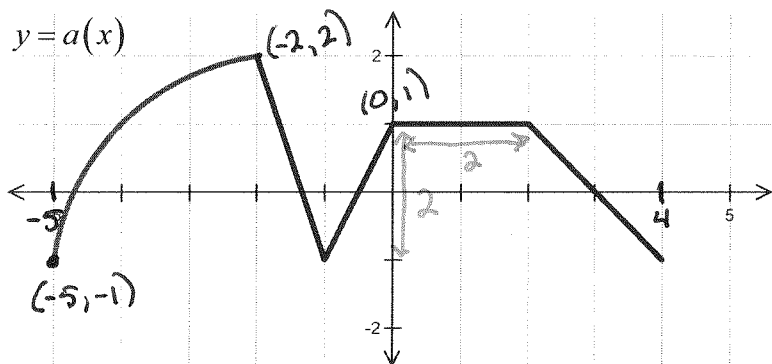


IB Math 1 5E Mixed Transformations Warm Up

Use the graph of the function  $a$



Sketch the graphs of the functions.

1.  $b(x) = -\frac{3}{2}a(2x+6) - 1 = -\frac{3}{2}a(2(x+3)) - 1$

Horizontal

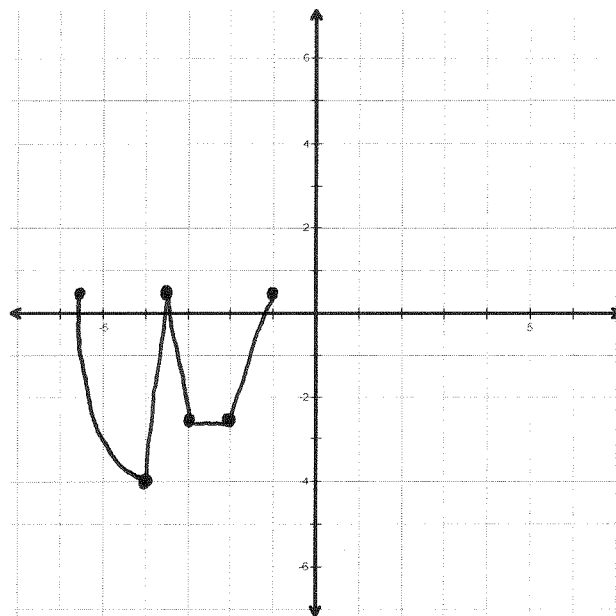
Left 3  
Di baf 1/2

Vertical

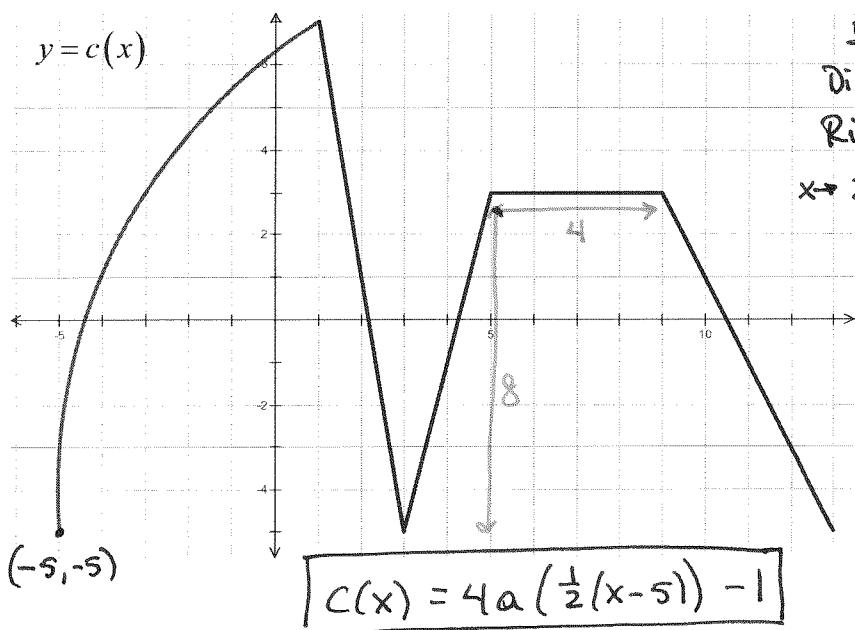
Down 1  
Di baf 3/2

Reflection over x-axis

$\frac{x}{2} - 3$	X	Y	$-\frac{3}{2}y - 1$
$-\frac{11}{2}$	-5	-1	$\frac{1}{2}$
-4	-2	2	-4
$-\frac{7}{2}$	-1	-1	$\frac{1}{2}$
-3	0	1	$-\frac{5}{2}$
-2	2	1	$-\frac{5}{2}$
-1	4	-1	$\frac{1}{2}$



2. Write the equation for  $c(x)$  in terms of  $a$ .



Horiz  
Di baf 2  
Right 5  
 $x \rightarrow 2x + 5$

Vert  
Di baf 4  
Down 1  
 $y \rightarrow 4y - 1$

$$\begin{array}{l} (-5, -1) \\ \swarrow \quad \searrow \\ 2(-5) + 5 \quad 4(-1) - 1 \\ \downarrow \quad \downarrow \\ (-5, -5) \end{array}$$

HW SE (2-8)